



Convention on  
Biological Diversity



WCMC



# INTRODUCTION TO UN BIODIVERSITY LAB

Lauren Weatherdon, UNEP-WCMC



Impact  
Observatory



Microsoft





## WHAT IS UN BIODIVERSITY LAB (UNBL)?

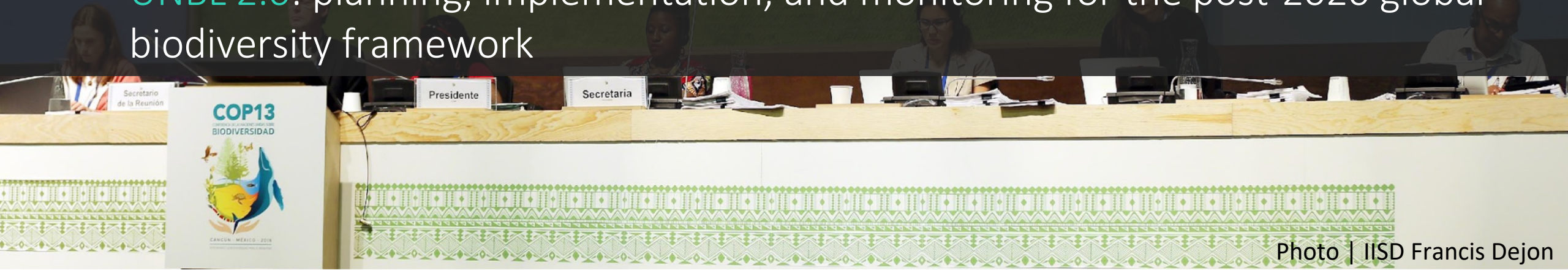
---

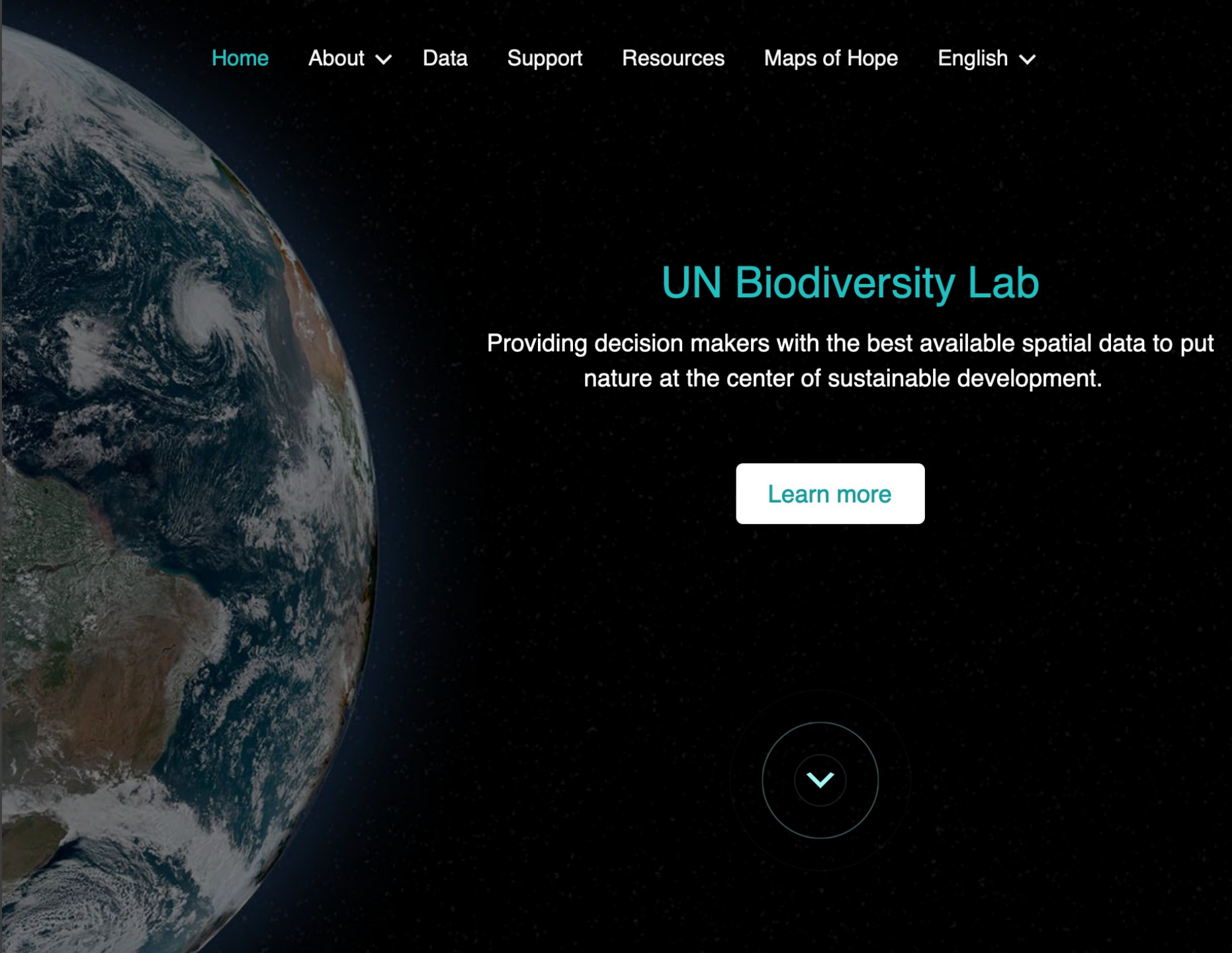
- FREE, open-source platform ([www.unbiodiversitylab.org](http://www.unbiodiversitylab.org))
- Provides stakeholders with access to high-quality global spatial data layers & analytic tools
- Does **NOT** require GIS expertise



## A TRUSTED PLATFORM FOR COMMITMENTS TO THE CBD

- Initially created in 2018
- Led to a 2X increase in the number of maps between the 5NR and 6NR
- UNBL 2.0: planning, implementation, and monitoring for the post-2020 global biodiversity framework



[Home](#)[About](#) ▾[Data](#)[Support](#)[Resources](#)[Maps of Hope](#)[English](#) ▾

## UN Biodiversity Lab

Providing decision makers with the best available spatial data to put nature at the center of sustainable development.

[Learn more](#)

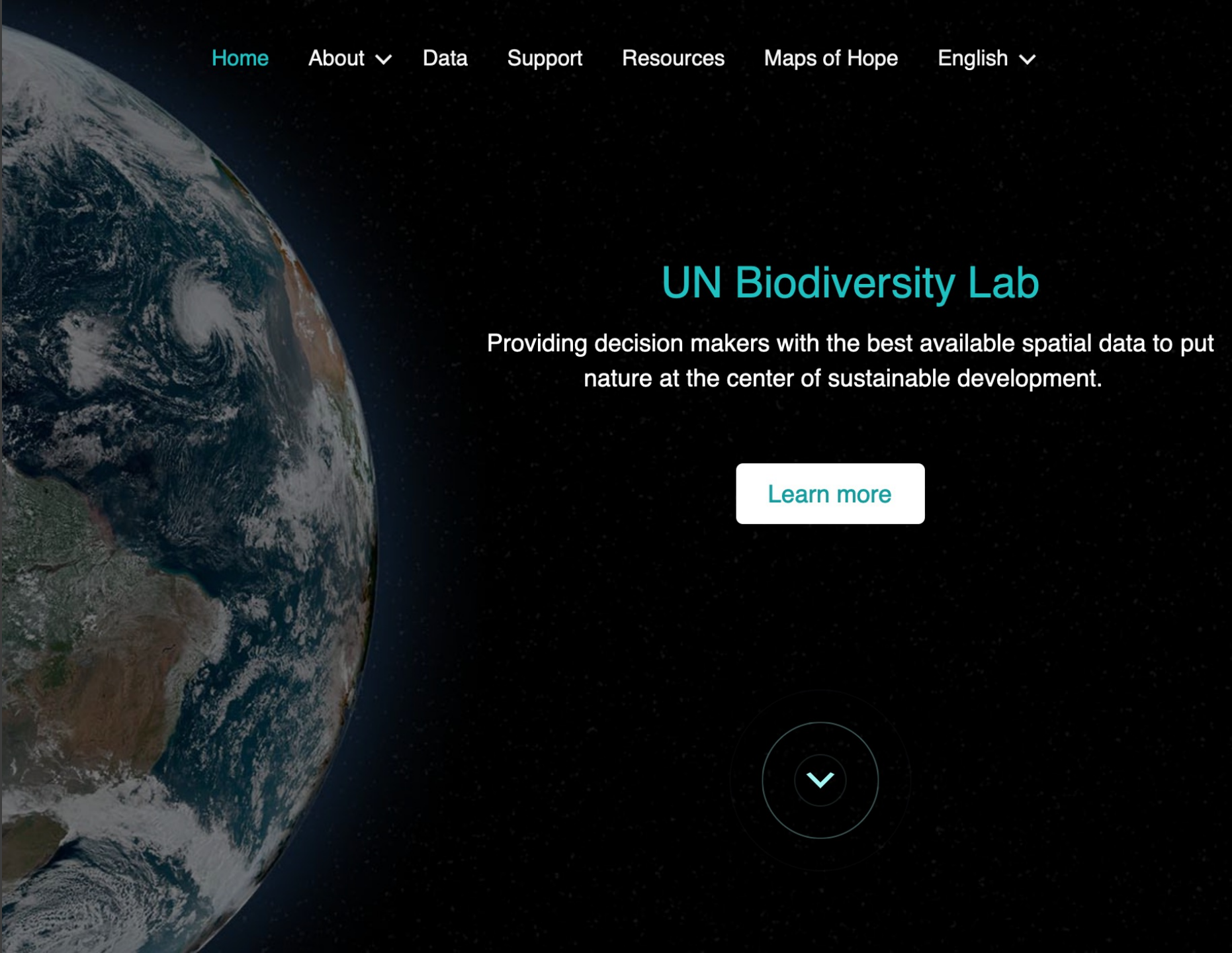
# INTRODUCING UNBL 2.0...



UNBio diversity



Lab

[Home](#)[About](#) ▾[Data](#)[Support](#)[Resources](#)[Maps of Hope](#)[English](#) ▾

## UN Biodiversity Lab

Providing decision makers with the best available spatial data to put nature at the center of sustainable development.

[Learn more](#)

# INTRODUCING UNBL 2.0...

## OVERALL | WHAT'S NEW?

---

- Enhanced usability & modern web app design
- Fully available in English, French, Portuguese, Russian, and Spanish
- API to enable seamless integration with other solutions

## CORE FEATURES | WHAT'S NEW?

---

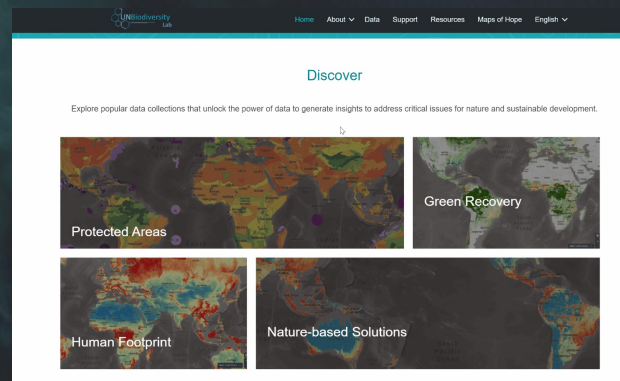
1. Data catalogue now offering over 400 layers *(Updated)*
2. Data collections to generate insight for action *(New)*
3. Analytics to calculate key metrics for any country *(New)*
4. Secure workspaces available to ANY not-for-profit actors *(Expanded)*
5. Create maps for your country *(Updated)*
6. Map Essential Life Support Areas (Coming in 2022!) *(New)*



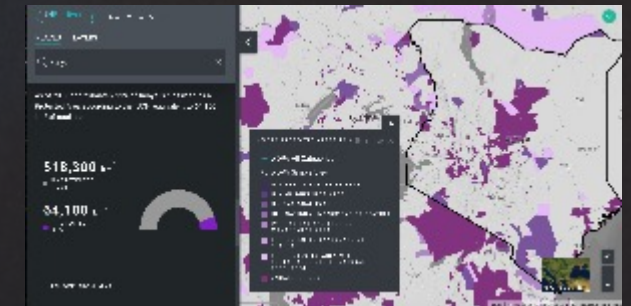
# UN BIODIVERSITY LAB | 6 KEY FEATURES



1. Access >400 global layers



2. Explore data collections



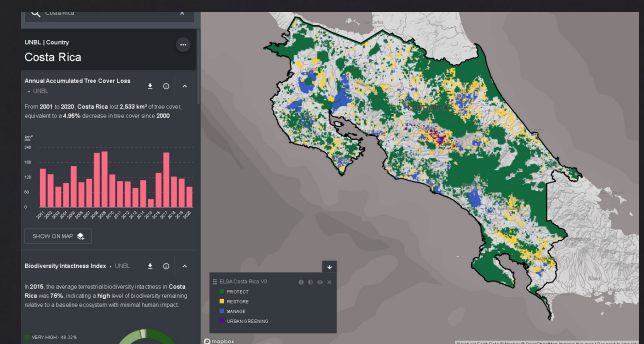
3. Calculate dynamic metrics



4. Create secure workspaces



5. Create maps



6. Map Essential Life Support Areas



## POLL | WHAT FEATURES ARE MOST RELEVANT FOR YOU?

---

1. Access global data layers
2. Access customized collections
3. View dynamic metrics for my country
4. Create a secure workspace to upload my data & view metrics for my area of interest
5. Create maps
6. Map my country's essential life support areas
7. Other – *share in the chat!*

## 3 EASY STEPS TO GET INVOLVED

---

1. Sign up for our mailing list! → *Drop your email into the chat*
2. Register today → *www.unbiodiversitylab.org, click on data tab*
3. Create a UNBL workspace → *Email di.zhang@undp.org*



Convention on  
Biological Diversity



WCMC



# THANK YOU!

[www.unbiodiversitylab.org](http://www.unbiodiversitylab.org)

[anne.virnig@undp.org](mailto:anne.virnig@undp.org)

[lauren.weatherdon@unep-wcmc.org](mailto:lauren.weatherdon@unep-wcmc.org)



Impact  
Observatory



Microsoft

