

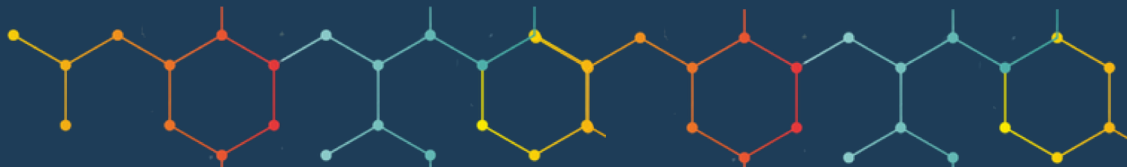
# Modeling the Impact of COVID-19 on the Sustainable Development Goals

Training on the International Futures Tool

COVID-19 Recovery Pathways:  
The 'SDG Push' Scenario

Wednesday 9 June 2021

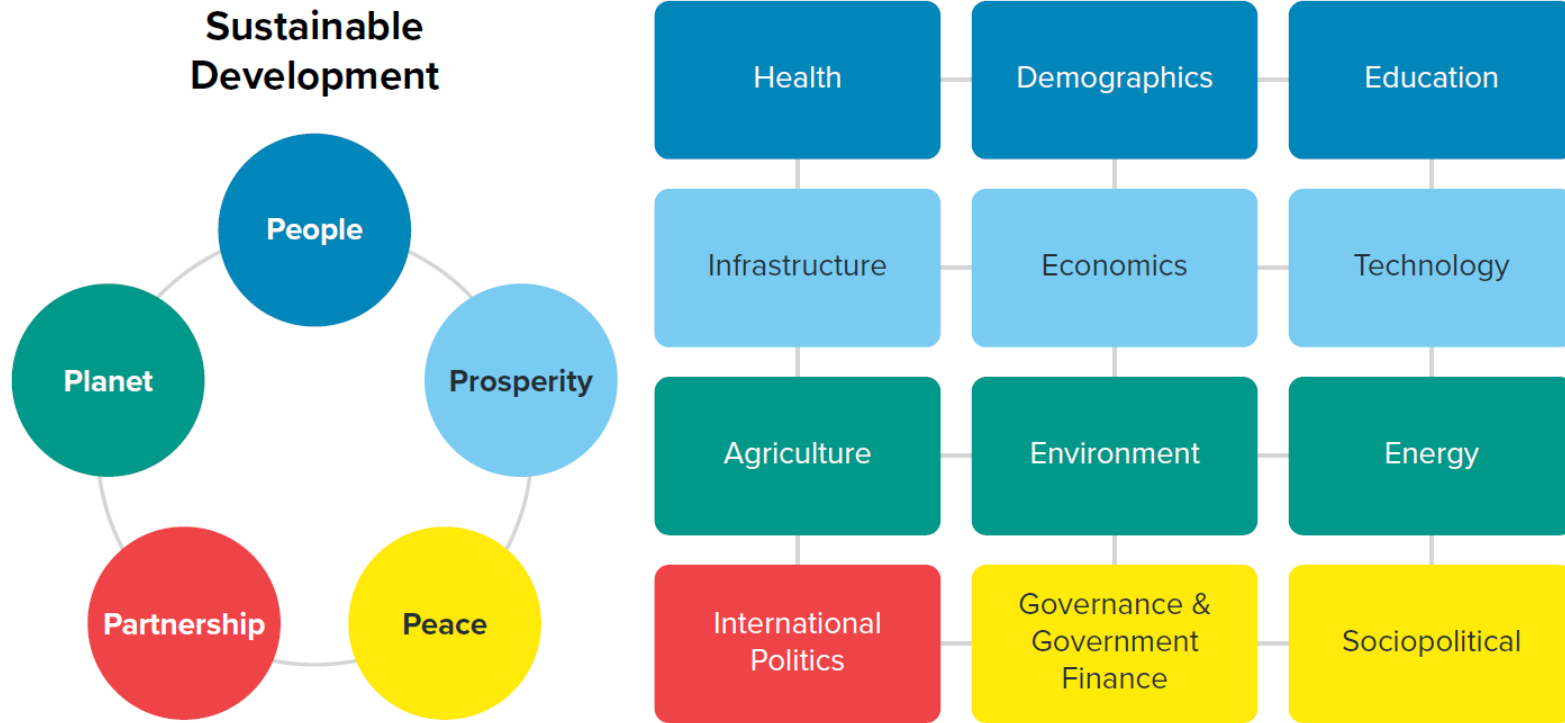
<https://www.sparkblue.org/IFs>



# Introductions

- Welcome from UNDP SDG Integration!
- Review of Session 1
  - International Futures
  - COVID on the SDGs
  - Scenario Analysis
- Adapting the *SDG Push* scenario for a specific country context
  - Quick Scenario Analysis with Tree
  - Example 1: Governance
  - Example 2: Government spending
- Questions & Answers

# International Futures (IFs)



**Box Figure B2.1. The Five “Ps” and the associated models of the IFs system**

Note: The models of IFs are heavily interconnected.

What is the purpose of models?

A model is a representation of reality. They can help us think, plan and collaborate.

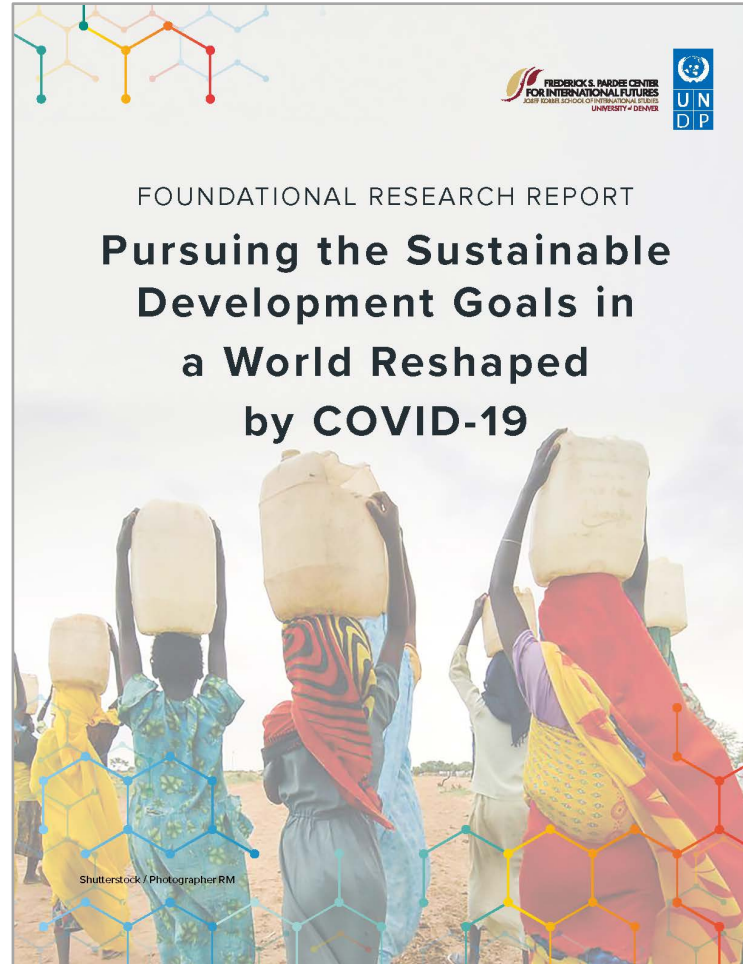
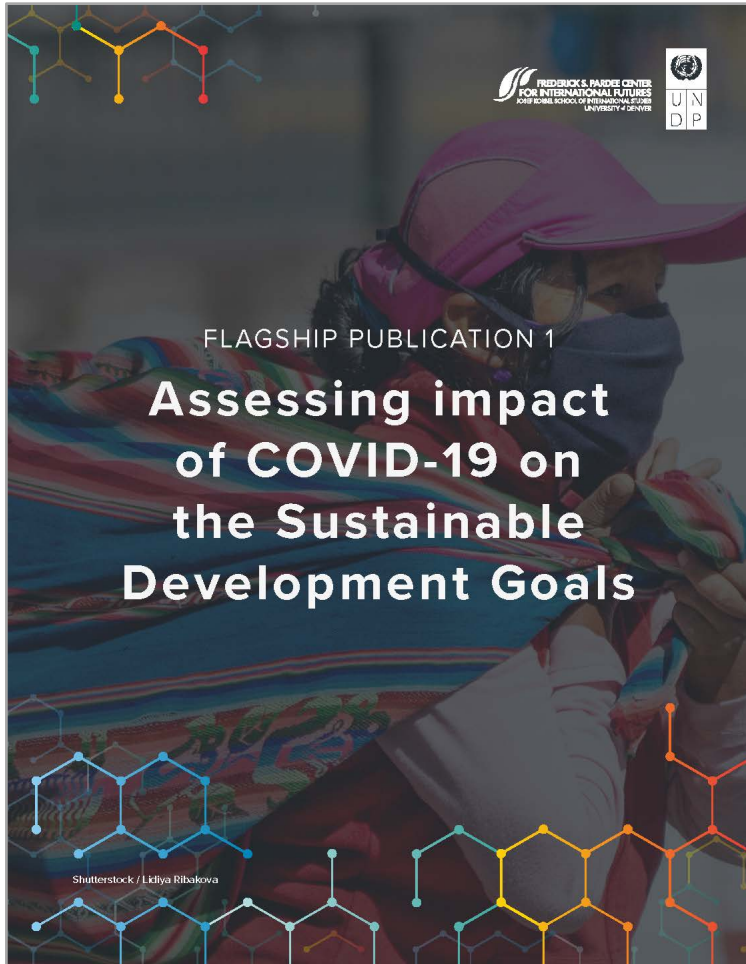
This is a large model and you should expect to learn about different aspects of the model as you go.

Learning about the model is not easy and requires an investment on your part.

# Opening the “black box”: layers of support

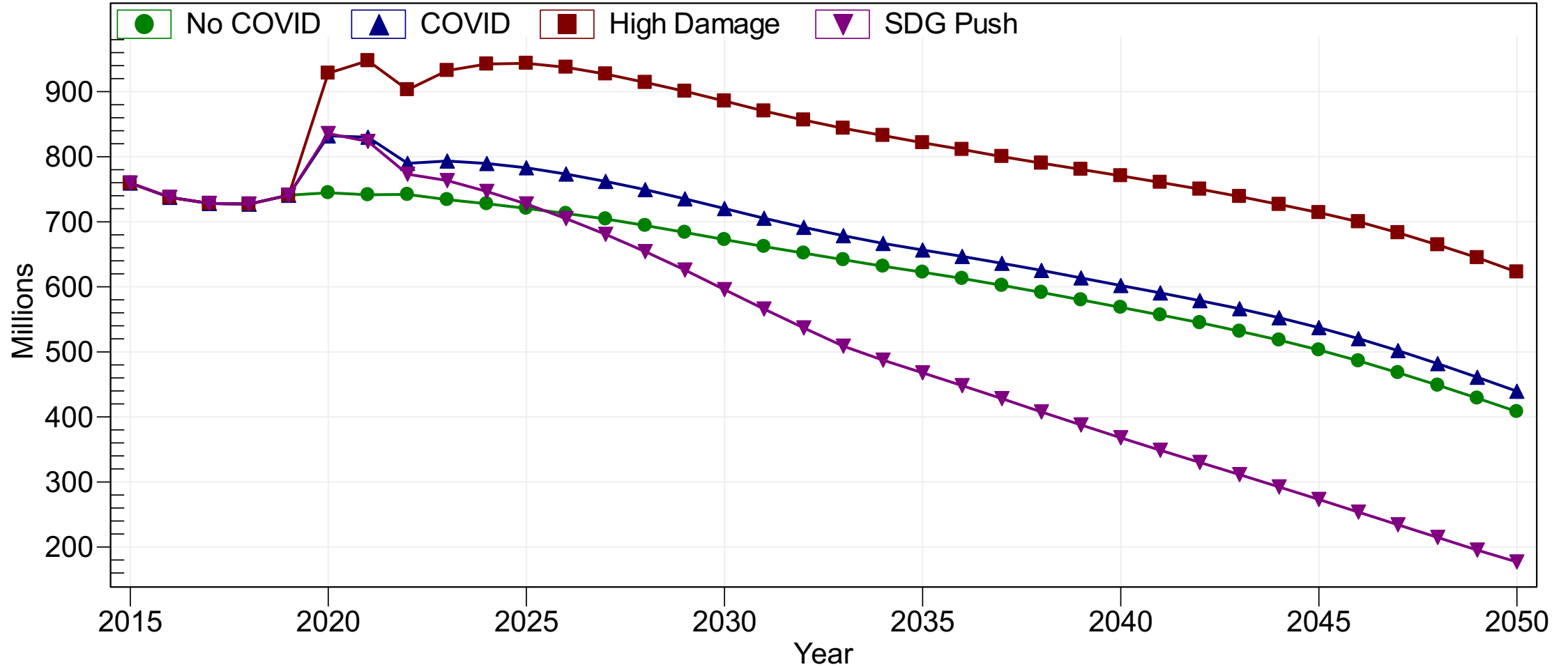
- Basic "How to?" videos: <https://pardee.du.edu/ifs-course/getting-started-quick-reference>
  - Additional course materials: <https://pardee.du.edu/ifs-course>
- Publications: <https://pardee.du.edu/patterns-potential-human-progress>
- Help system wiki: [https://pardee.du.edu/wiki/Main\\_Page](https://pardee.du.edu/wiki/Main_Page)
  - Poverty wiki: [https://pardee.du.edu/wiki/Economics#Poverty\\_2](https://pardee.du.edu/wiki/Economics#Poverty_2)
- Network map of relationships in IFs: <http://34.215.105.41:8080/ifn/>
  - “Drivers” map in IFs (we can show if we have time, but probably during office hours)
- SparkBlue FAQ: <https://www.sparkblue.org/IFs-FAQ-covid-19>

# COVID-19 and the SDGs



# COVID-19 and the SDGs

## Global Poverty Headcount <\$1.90 per Day, Log Normal



# The SDG Push scenario

## Social Protection

- Shift towards a more crop-based diet
- Modernization of cookstoves
- Increased public health spending
- Greater welfare transfers in low-income economies
- Increased access to piped water and improved sanitation

## Digital Disruption and Innovation

- Higher secondary education graduation rates
- Increased focus on science and engineering graduates
- Greater education budget allocation
- Higher research & development spending
- Higher infrastructure spending
- Increased access to fixed and mobile broadband

## Governance

- Strengthened democratic institutions
- Increased government transparency

## Green Economy

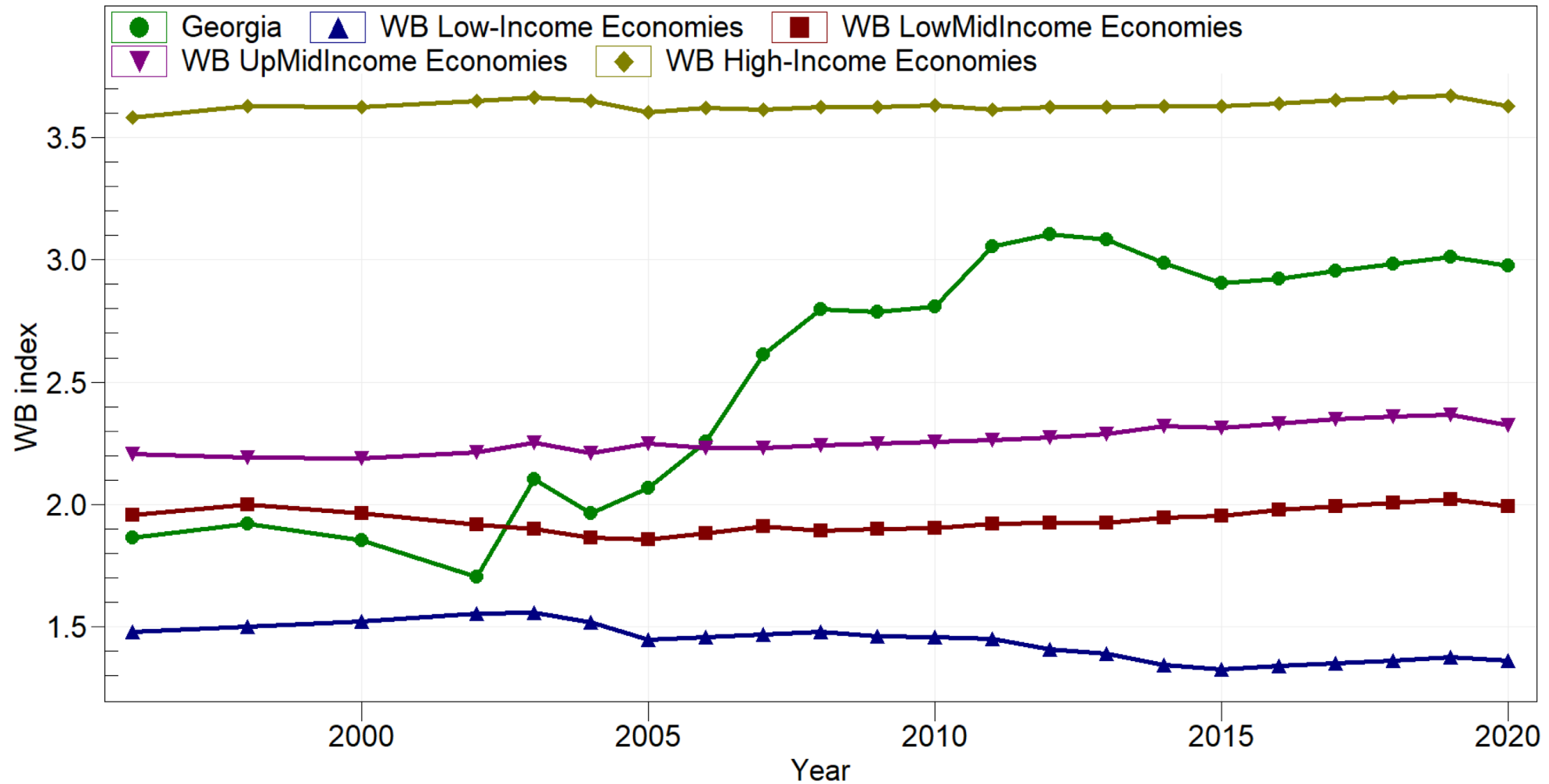
- Lower water demand
- Reduced electricity transmission loss
- Improved urban air quality
- Reforestation
- Stronger carbon tax regime
- Reduced energy intensity in the economy
- Greater investment in renewable resources
- Reduced energy demand
- Increased electricity access
- Reduced agricultural losses
- Improved crop yields
- Reduced fish catches for largest producers

# Scenario development

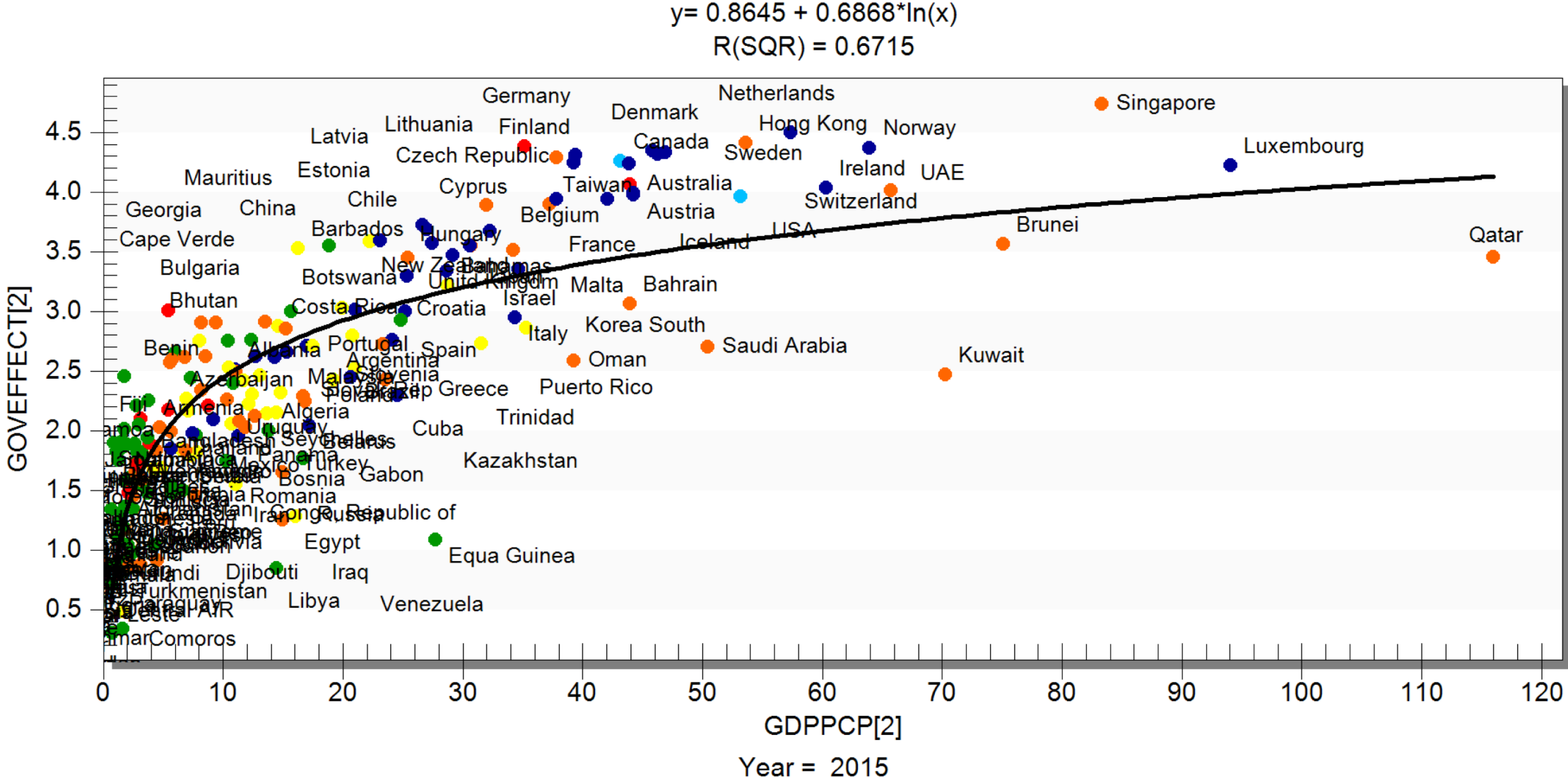
- Choose a country or region
- Choose an intervention
- How to think about “benchmarking”?
- How to make changes to SDG Push
- How to view the results of your changes

# Benchmarking!

## Governance Effectiveness



# Benchmarking!



Let's get into the model!

# Thank you for your attention

See you in the online Discussion Rooms!

<https://www.sparkblue.org/IFs>

